

Lake Sunapee Protective Association



4th-6th Grade

Environmental
Educational Programs



Environmental Programs for Grades 4-6

These LSPA educational programs are specifically designed for upper primary grade level learning objectives. Each lesson offers hands on learning through sensory experiences, guided exploration, and techniques for observing the natural world. LSPA's wide variety of programs can be adjusted to fit with specific curriculum needs and shaped to fit each classroom's dynamics.

**LSPA programs can be developed out in the field,
within the classroom,
or at LSPA's Learning Center!**



In the Field ~

Using each school's unique environment or nearby sites (forests, ponds, vernal pools, streams and wetlands) we discover the wonder that lies within each natural resource.



At LSPA Learning Center ~

LSPA's location in Sunapee harbor offers a unique space to observe a watershed environment and learn about all aspects of water. Educational tours along the river and harbor are available.

Go to LSPA's website for information about how LSPA educational programs tie into NH Science Frameworks and current science standards.

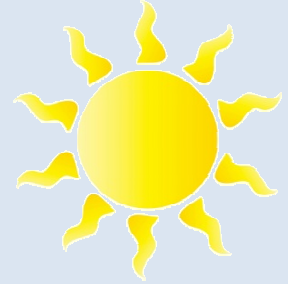
Relevant articles, research data and links to recent science activities can also be found on our website.

www.lakesunapee.org

Learning inspired by nature!

What is a Watershed?

LSPA's Enviroscope model is a great way for students to increase their understanding of what a watershed is and how it works. Activities with the model illustrate such concepts as point and non-point source pollution, run off and erosion.



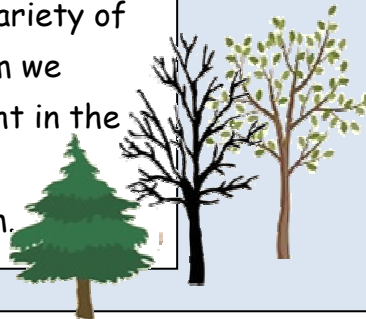
Animal Tracks and Signs

Who is sharing our backyards and schoolyards with us? Students examine the signs of activity that animals leave behind as well as discuss the habitats and food webs that connect them.



Trees are Terrific

Our New Hampshire landscape has a wide variety of trees to study and explore. In this program we investigate tree structure and function right in the school yard. Students will learn about the role of trees in a healthy watershed system.



Forests of the Watershed

Pick a forest to explore with an LSPA educator! You will investigate the habitats of New Hampshire forests. Come and find out what trees live here and how to identify them by studying their unique structures. Be prepared to hike and play games that focus on the amazing life of trees. *Half day program.



Water

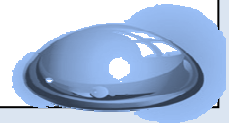
Water, Water Everywhere

Investigate the water cycle and the essential role of water in the lives of plants, animals, and people. Students participate in both inside and outside activities designed to "immerse" them in the water cycle.



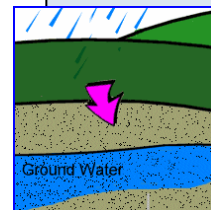
H²O Olympics

The unique physical properties of water are the focus for these hands-on investigations. Students explore surface tension, cohesion, adhesion and density in a series of classroom activities.



Water Under the Ground

Using an interactive groundwater model, students investigate the movement and flow of water systems underground. This classroom lesson dovetails with group activities that demonstrate the flow of groundwater.

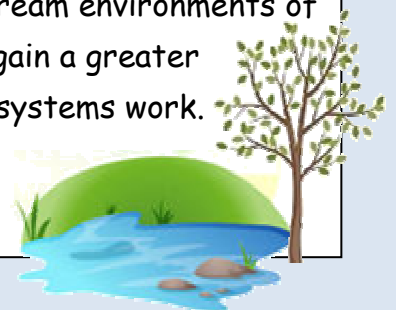


Watershed Ecology

How do different components of a New Hampshire watershed fit together to form an integrated ecosystem? This field program has students exploring meadow, forest, lakeshore and stream environments of the Lake Sunapee Watershed to gain a greater understanding of how watershed systems work.

*Full day program.

Can be held at various locations.



Habitats



Pond Life



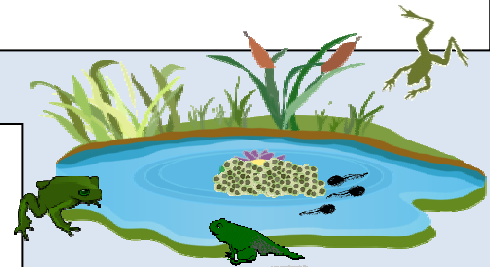
Students explore plant and animal life in the freshwater pond, both their physical adaptations and habitats. This program makes a real 'splash' with the students when they examine freshwater macroinvertebrates up close through a 'pond sweep'.

*Half day program. Can be held at various pond locations.

Life in the Fast Lane: Vernal Pools

The unique aquatic environment of temporary spring ponds is the setting for this exploration of life cycle and habitat. Frogs and aquatic insects are the focus of this field investigation.

*Can be held at various pool locations.



Wetland Wonders

Explore fascinating wetland habitats. Students study macroinvertebrates, learn about beavers and discover what makes a wetland unique.

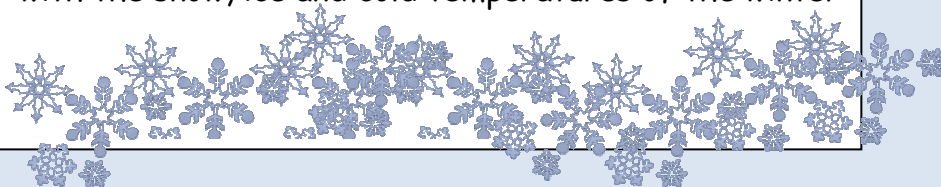
*Half day program.

Can be held at various wetland locations.



Winter in the Watershed

Explore the school yard in the winter with new eyes! Students will investigate how animals and plants cope with the snow, ice and cold temperatures of the winter

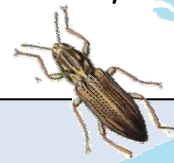


Learning inspired by nature!

Stream Science

Discover the fascinating world of streams with an LSPA educator as your guide. Students will become "stream scientist" and participate in biological and chemical testing of the aquatic environment. Activities include collecting and identifying macroinvertebrates, chemical water testing and stream bank surveys.

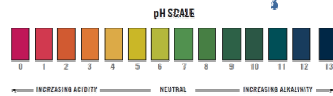
*Full or half day program.



Lake Science in the Harbor

Become limnologist for the day and study Lake Sunapee at LSPA's Learning Center in Sunapee Harbor! Students will take water samples from the lake and the Sugar River and perform several water quality tests, do a shoreline survey and become familiar with Sunapee's watershed.

*Full or half day program.



Create Your Own!

Develop a program with your specific curriculum needs as the focus. We can work with you and design a classroom and/or field experience that ties in with your grade level learning objectives. STEM and STEAM goals can be incorporated into each program.





The Mission Statement of Lake Sunapee Protective Association

LSPA, founded in 1898, is a member-supported nonprofit organization dedicated to preserving and enhancing the special environment of the Lake Sunapee region through education, research, and collaborative action.

Lake Sunapee Protective Association

PO Box 683

63 Main Street

Sunapee, NH 03782

(603) 763-2210

www.lakesunapee.org